

 Horsefeathers

SPRING
SUMMER
2020





LIVE YOUR HORSEFEATHERS!

The origin of Horsefeathers dates back to 1989. Hanuš Salz and his friends were some of the few snowboarders in Boundary Country, British Columbia, Canada. They were easily distinguishable from the local ski kids, thanks to their snowboard and skate inspired style and attitude. During that time the brand name was born out of a tight community based on friendship, fun and a lot of snowboarding. When Hanuš moved back to Czech Republic and met Pavel Kubiček, the two decided to officially launch the brand for three main reasons: they did not want to get a “proper” job, there was a lack of snowboard specific outerwear on the Czech market at that time and, perhaps most importantly, because they wanted to ride as much as possible. Thirty years later and the main drive behind the brand remains the same: friends, fun and snowboarding.

TECHNOLOGY	4
COLOR STORIES	6
HORSEFEATHERS X PHIL HACKETT	32
MAXIM HABANEC SKATE & CREATE	38
MEN'S STREETWEAR	46
MEN'S JACKETS	48
MEN'S SWEATSHIRTS	53
MEN'S T-SHIRTS	59
PANTS & SHORTS	79
MEN'S BOARDSHORTS	86
MEN'S ACCESSORIES	88
MEN'S UNDERWEAR	96
WOMEN'S STREETWEAR	106
WOMEN'S JACKETS	108
WOMEN'S SWEATSHIRTS	110
WOMEN'S DRESSES	114
WOMEN'S TOPS	118
WOMEN'S ACCESSORIES	127
YOUTH STREETWEAR	132
SUNGLASSES	142
HISTORY	156
TEAM	158
CONTACTS	163

TECH- NOLOGY



ULTRATECH WATERPROOF FABRICS

ultratechfabrics.com

UltraTech is a range of high quality materials developed in collaboration with leading Taiwanese manufacturers who specialize in technical fabrics and yarns. Designed to maximize performance across diverse conditions, UltraTech fabrics are manufactured in fully controlled facilities, using advanced processes: The technical outer shell is laminated with a fully waterproof and breathable membrane, then treated with a water repellent DWR (Durable Water Repellent) film. This process guarantees a high performance fabric that is rugged and robust.



OUTER DWR COATING

Durable Water Repellent coating, as the name suggests, is hydrophobic. It repels water, causing it to 'bead up' on the outer surface and stops it from penetrating the outermost layer. When melting snow cannot penetrate the outer surface of the fabric and saturate inner layers, breathability remains high, weight remains low and performance is not compromised.



MADE IN EU

We proudly produce most of our streetwear and accessories in European factories. Over the years we have established long-term partnerships based on high quality and continuous development.



STRETCH FABRICS

A range of stretch fabrics developed to be used on all products, which are frequently under pressure during movement. These fabrics contain from 1 % to 13 % of elastane.



YKK ZIPPERS

Zippers from YKK are synonymous with quality and reliability. These extremely durable, easy to use, high quality zippers are currently the global leader for performance outerwear applications. Being smooth to operate and with less of a tendency to catch, or malfunction, these zippers can be easily operated using one hand in even the coldest conditions. We use only YKK in every piece on every line in our range.



THREADS BY COATS

Coats have been manufacturing threads for over 250 years. This experience means that their thread range is the result of decades of innovation and constant improvement and is known worldwide for being of the highest quality and incorporating many patented technologies. This results in some of the strongest and most reliable threads ever manufactured.



BEER INSPIRED

You already know it, we love beer! And we love products with beer inspired graphics and small hidden beer features. Follow the icon so you don't miss these gems. Cheers!













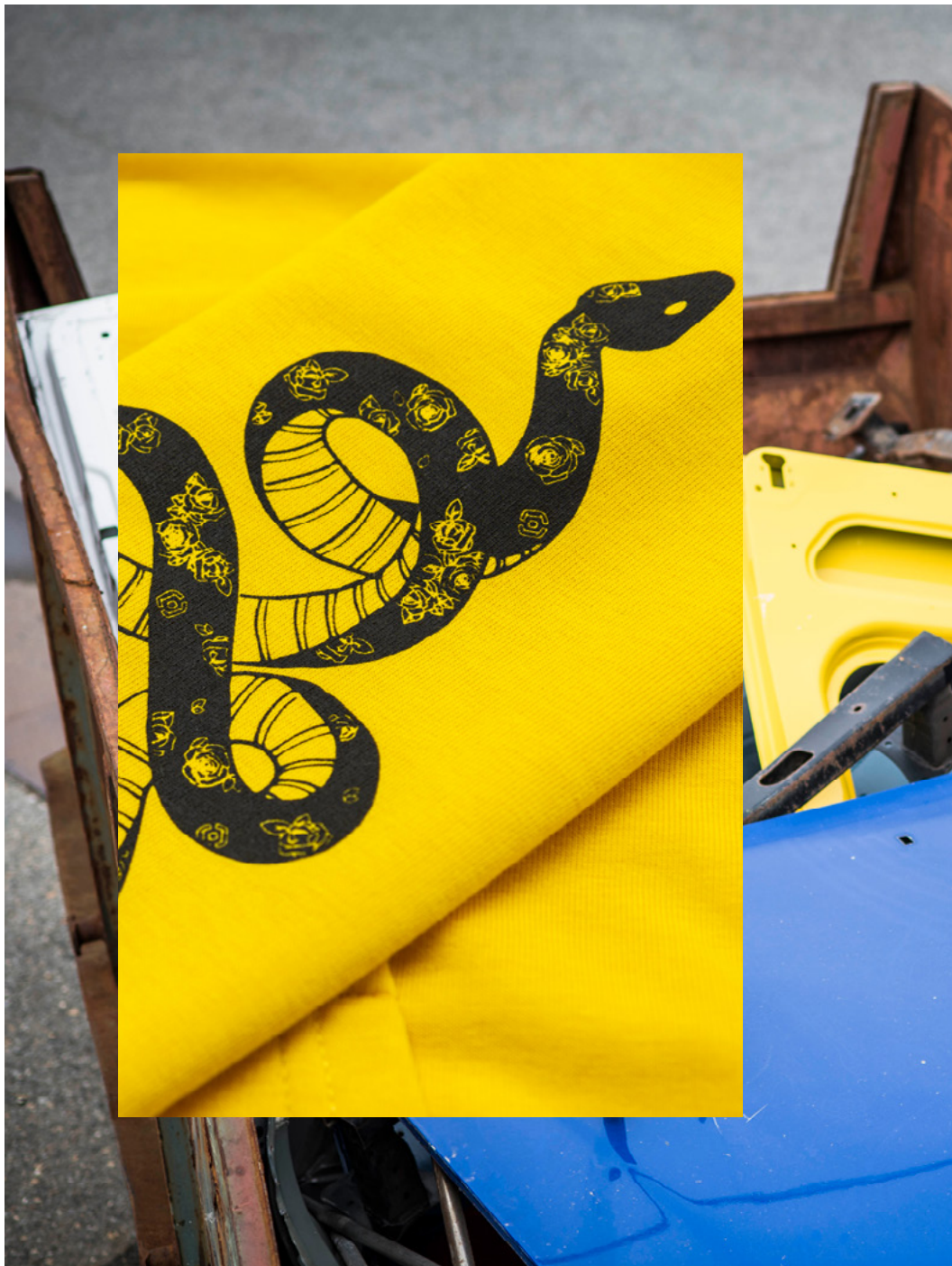




**GRANITE
GREEN**































GARNET ROSE









HORSE- FEATHER X PHILLYERS HACKETT



Phil Hackett is an iconic artist whose graphic style is easily spotted among other works. The Gnarlboro pack with skate decks instead of cigarettes, Tic Tac skate mints, or any other Micro Living series that your friends have been sharing on social media. All that and more is Phil. His drawings, which are often connected to skateboarding, frequently go viral because they are simply awesome. Our pickle collabo is no exception and we are really excited about it.

Phil is a British freelance illustrator, skater and a proponent of synthpop, who currently resides in Bristol. His work extends to media like BBC, The Guardian, or the graphics for the 10th annual of Vans Shop Riot.

hackettillustration.com

[@hackettillustration](https://www.instagram.com/hackettillustration)

[#hfxhackett](https://twitter.com/hfxhackett)

PICKLES T-SHIRT



100 % COTTON

PRINT ON CHEST,
WOVEN LABEL
AT BOTTOM HEM

FIT
SLIM

SIZES
S, M, L, XL, XXL

27,99€

15,19 €



BLACK



SMOKE PINE



IMPERIAL BLUE

PICKLES DECK

100 % CANADIAN MAPLE

7 PLY DECK

SIZES

7.75", 7.875", 8.0", 8.125", 8.25"

51,99 €

28,05€



DELICIOUS DECK

100 % CANADIAN MAPLE

7 PLY DECK

SIZES

7.75", 7.875", 8.0", 8.125", 8.25"

FRAZIER

100 % COTTON

WOVEN BOXER SHORTS, ALLOVER PRINTED LIGHTWEIGHT FABRIC, COMFORTABLE FIT, HIGHLY DURABLE, CUSTOM ELASTIC WAISTBAND

SIZES

S, M, L, XL, XXL

15,99€

8,69€



PLAYGROUND



PICKLES

MANNY

100 % COTTON

WOVEN BOXER SHORTS, ALLOVER PRINTED LIGHTWEIGHT FABRIC, COMFORTABLE FIT, HIGHLY DURABLE, WOVEN LABEL

SIZES

S, M, L, XL, XXL

13,99€

7,59€



PLAYGROUND



PICKLES

SIDNEY



95 % COTTON, 5 % ELASTANE

KNITTED BOXER BRIEFS, COMFORTABLE FIT, HIGHLY DURABLE, CUSTOM ELASTIC WAISTBAND

SIZES

S, M, L, XL, XXL

17,99€
9,79€



PLAYGROUND

PICKLES

CONOR



80 % COTTON, 15 % POLYPROPYLENE, 5% ELASTANE

PHOTO PRINT,
REINFORCED HEEL AND TOE

FIT

CREW

SIZES

5-7, 8-10, 11-13

7,99€
4,40€



PICKLES



Skateboarding has always been about creativity and style and that is why we really enjoy our coop with Max. His Skate & Create motto infuses all his projects including his Signature collection. The awesome side of skateboarding is that it is open for everyone to find a personal path based on own attitude and approach. This is Max's way, so let Skate & Create become an inspiration!

#skateXcreate



MAXIM HABANES

SKATE & CREATE
SIGNATURE LINE

PERCH MAX

5.000 MM

WATERPROOFNESS

5.000 GM

BREATHABILITY

100 % POLYESTER

WATER REPELLENT
LAMINATED MEMBRANE,
OUTER G6 DWR TREATMENT,
100 % NYLON TAFFETA LINING,
YKK ZIPPERS,
THREADS BY COATS,
ADJUSTABLE BOTTOM HEM,
CHINGUARD WITH
BRUSHED FLEECE

INSULATION

NONE

FIT

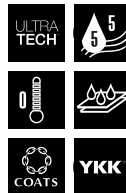
REGULAR ANORAK

SIZES

S, M, L, XL, XXL

119,99€

64,79€



NAVY

PIERCE MAX



65 % COTTON, 35 % POLYESTER

BRUSHED FLEECE,
PRINT ON CHEST AND BACK,
THUMBHOLES

SIZES

S, M, L, XL, XXL

67,99€

36,74€



BLACK

FINGERPRINT MAX



100 % COTTON

PRINT ON CHEST AND BACK

FIT

REGULAR LONG SLEEVE

SIZES

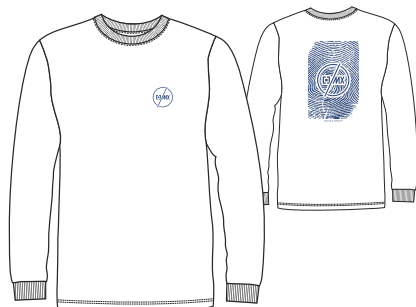
S, M, L, XL, XXL

31,99€

17,27€



BLACK



WHITE

TOKEN MAX



100 % COTTON

PRINT ON CHEST

FIT

REGULAR

SIZES

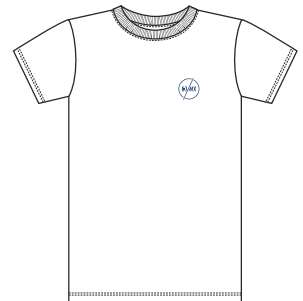
S, M, L, XL, XXL

27,99€

15,18€



BLACK



WHITE

MACKS MAX



98 % COTTON TWILL, 2 % ELASTANE

CLASSIC CHINO PANTS, ZIPPER FLY, YKK ZIPPERS

FIT
REGULAR SLIM

SIZES
28, 30, 32, 34, 36, 38

71,99€

38,83€



BLACK



HF X AMB CREATE DECK ^{MAX}

100 % CANADIAN MAPLE

7 PLY DECK,
HORSEFEATHERS X AMBASSADORS

SIZES

7.75", 7.875", 8.0", 8.125", 8.25"



47,99€

25,96€



MEN'S STREET- WEAR



CUSTOM
ESTABLISHED
REGISTERED TRADE
Horsefeather

ANDREW

5.000 MM

WATERPROOFNESS

5.000 GM

BREATHABILITY

SOLID COLORS:

65 % POLYESTER, 35 % COTTON

CAMO:

100 % POLYESTER

WATER REPELLENT
LAMINATED MEMBRANE,
OUTER C6 DWR TREATMENT,
100 % NYLON TAFFETA LINING,
YKK ZIPPERS,
THREADS BY COATS
INTERIOR POCKET,
WAIST ADJUSTMENT,
ADJUSTABLE BOTTOM HEM,
CHINGUARD WITH
BRUSHED FLEECE

INSULATION

NONE

FIT

REGULAR LONG

SIZES

S, M, L, XL, XXL



BLACK



ISAAC

5.000 MM
WATERPROOFNESS

5.000 GM
BREATHABILITY

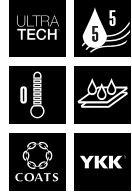
100 % POLYESTER

WATER REPELLENT
LAMINATED MEMBRANE,
OUTER G6 DWR TREATMENT,
100 % NYLON TAFFETA LINING,
YKK ZIPPERS,
THREADS BY COATS,
ADJUSTABLE BOTTOM HEM,
CHINGUARD WITH
BRUSHED FLEECE

INSULATION
NONE

FIT
REGULAR

SIZES
S, M, L, XL, XXL



99,99€
54,01€



LEMON



REFLECTIVE PRINT
ON BLACK



BLACK



HEATHER GRAY



RED

PERCH

5.000 MM

WATERPROOFNESS

5.000 GM

BREATHABILITY

100 % POLYESTER

WATER REPELLENT
LAMINATED MEMBRANE,
OUTER C6 DWR TREATMENT,
100 % NYLON TAFFETA LINING,
YKK ZIPPERS,
THREADS BY COATS,
ADJUSTABLE BOTTOM HEM,
CHINGUARD WITH
BRUSHED FLEECE

INSULATION

NONE

FIT

REGULAR ANORAK

SIZES

S, M, L, XL, XXL



111,89€

60,39€

HEATHER GRAY



LEMON



BLACK





ULTRATECH WATERPROOF FABRICS

ultratechfabrics.com

UltraTech is a range of high quality materials developed in collaboration with leading Taiwanese manufacturers who specialize in technical fabrics and yarns. Designed to maximize performance across diverse conditions, UltraTech fabrics are manufactured in fully controlled facilities, using advanced processes: The technical outer shell is laminated with a fully waterproof and breathable membrane, then treated with a water repellent DWR (Durable Water Repellent) film. This process guarantees a high performance fabric that is rugged and robust.



OUTER DWR COATING

Durable Water Repellent coating, as the name suggests, is hydrophobic. It repels water, causing it to 'bead up' on the outer surface and stops it from penetrating the outermost layer. When melting snow cannot penetrate the outer surface of the fabric and saturate inner layers, breathability remains high, weight remains low and performance is not compromised.

Horsefeathers



BARRY DWR



100 % POLYESTER

OUTER C6 DWR TREATMENT, BRUSHED INTERIOR, PRINT ON CHEST (TEAM),
PRINT ON CHEST AND BACK (BLACK), THUMBHOLES, ZIPPER POCKETS, YKK ZIPPERS

FIT
REGULAR

SIZES
S, M, L, XL, XXL

79,99€

43,23€



TREVOR



65 % COTTON, 35 % POLYESTER

BRUSHED FLEECE,
FULL FRONT ZIP,
PRINT ON CHEST AND SLEEVE,
YKK ZIPPERS

SIZES

S, M, L, XL, XXL



LAVA RED

71,99€

38,83€



BLACK



LEMON



GRANITE GREEN

JENSEN



SOLID COLORS / WOODLAND:
65 % COTTON, 35 % POLYESTER

ASH / DARK ASH:
50 % COTTON, 50 % POLYESTER

NON BRUSHED FLEECE,
FRONT ZIP,
WOVEN PATCH ON CHEST,
YKK ZIPPERS

SIZES

S, M, L, XL, XXL



DARK ASH

67,99€

36,74€



BLACK



ASH



WOODLAND

GRANT



65 % COTTON, 35 % POLYESTER

NON BRUSHED FLEECE,
PRINT ON CHEST,
FRONT ZIP,
WOVEN LABEL AT BOTTOM,
YKK ZIPPER

SIZES

S, M, L, XL, XXL



LEMON

71,99€

38,83€



BLACK



GRANITE GREEN



TIE DYE

SHERLOCK



SOLID COLORS:
65 % COTTON, 35 % POLYESTER

DARK ASH:
50 % COTTON, 50 % POLYESTER

BRUSHED FLEECE,
PRINT ON CHEST,
ZIPPER POCKETS,
ARMPIT VENTING,
THUMBHOLES,
YKK ZIPPERS,
AUDIO HOLE IN
KANGAROO POCKET

SIZES

S, M, L, XL, XXL



GRANITE GREEN

71,99€

38,83€



BLACK



LAVA RED



DARK ASH

LEADER



65 % COTTON, 35 % POLYESTER

BRUSHED FLEECE,
PRINT ON CHEST,
THUMBHOLES

SIZES

S, M, L, XL, XXL

59,99€

32,45€



TIE DYE



BLACK



LEMON



WOODLAND



LAVA RED

SPAZ LS



100 % COTTON

PRINT ON CHEST

FIT

REGULAR LONG SLEEVE

SIZES

S, M, L, XL, XXL



LAVA RED

29,99€

16,17€



WOODLAND



BLACK

VALE LS



100 % COTTON

PRINT ON CHEST AND BACK

FIT

SLIM LONG SLEEVE

SIZES

S, M, L, XL, XXL

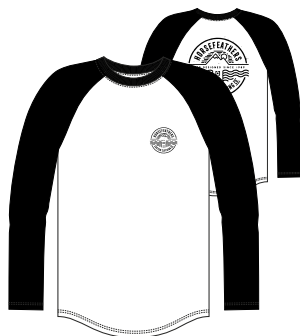


31,99€

17,27€



LINDEN GREEN



WHITE



WOODLAND



LAVA RED

BAM LS



100 % COTTON

PRINT ON CHEST

FIT

SLIM 3/4 SLEEVE

SIZES

S, M, L, XL, XXL



WOODLAND

29,99€

16,17€



BLACK



SMOKE PINE

SPAZ SS



SOLID COLORS:
100 % COTTON

WOODLAND:
50 % COTTON, 50 % POLYESTER

PRINT ON CHEST

FIT
REGULAR

SIZES
S, M, L, XL, XXL



27,99€

15,18€



WOODLAND



LINDEN GREEN



TIE DYE

FAB



SOLID COLORS:
100 % COTTON

ASH:
50 % COTTON, 50 % POLYESTER

PRINT ON CHEST AND BACK

FIT
REGULAR

SIZES
S, M, L, XL, XXL



27,99€

15,18€



IMPERIAL BLUE



ASH



BLACK

TART



100 % COTTON

PRINT ON CHEST AND BACK

FIT

REGULAR

SIZES

S, M, L, XL, XXL



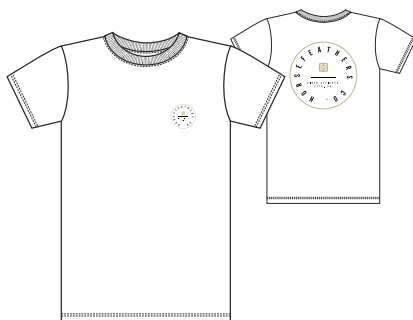
WOODLAND

25,99€

14,08€



BLACK



WHITE

STOCK



100 % COTTON

EMBROIDERY ON CHEST

FIT

REGULAR

SIZES

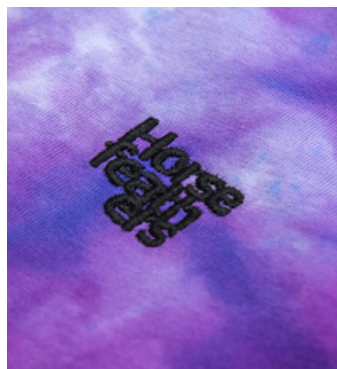
S, M, L, XL, XXL

23,99€

12,98€



TIE DYE



BLACK



WOODLAND

VALE SS



SOLID COLORS:
100 % COTTON

ASH:
50% COTTON, 50 % POLYESTER

PRINT ON CHEST

FIT
SLIM

SIZES
S, M, L, XL, XXL



23,99€

12,98€

SMOKE PINE



BLACK



ASH

BRUIN

design by
cubadog76.cz



100 % COTTON

PRINT ON CHEST

FIT
REGULAR

SIZES
S, M, L, XL, XXL



BLACK



23,99€

12,98€



WOODLAND



LAVA RED

COCKTAIL



SOLID COLORS:
100 % COTTON

ASH:
50 % COTTON, 50 % POLYESTER

PRINTED CHEST POCKET

FIT
SLIM

SIZES
S, M, L, XL, XXL

27,99€

15,18€



WHITE



BLACK



ASH

BEER CAP



100 % COTTON

PRINT ON CHEST

FIT

REGULAR

SIZES

S, M, L, XL, XXL



23,99€

12,98€



WHITE



BLACK



LINDEN GREEN

SACRIFICE

design by
@daviddebete



SOLID COLORS:
100 % COTTON

ASH:
50 % COTTON, 50 % POLYESTER

PRINT ON CHEST

FIT
SLIM

SIZES
S, M, L, XL, XXL



25,99€

14,08€



ASH



BLACK



SMOKE PINE

UNITED COLORS



100 % COTTON

PRINT ON CHEST

FIT
REGULAR

SIZES
S, M, L, XL, XXL

25,99€

14,08€



BLACK



RAGGED



100 % COTTON

PRINT ON CHEST

FIT

REGULAR

SIZES

S, M, L, XL, XXL



IMPERIAL BLUE

23,99€

12,98€



BLACK

LAVA RED

LINDEN GREEN

BASE



SOLID COLORS / WOODLAND:
100 % COTTON

ASH:
50 % COTTON, 50 % POLYESTER

PRINT ON CHEST

FIT
REGULAR

SIZES
S, M, L, XL, XXL



BLACK

ASH

IMPERIAL BLUE

WHITE

LAVA RED

FAIR



100 % COTTON

PRINT ON CHEST

FIT

SLIM

SIZES

S, M, L, XL, XXL



19,99€

10,78€



SMOKE PINE



REFLECTIVE

LAVA RED

LINDEN GREEN

WOODLAND

TIE DYE

QUARTER



SOLID COLORS / WOODLAND:
100 % COTTON

ASH:
50 % COTTON, 50 % POLYESTER

PRINT ON CHEST

FIT
SLIM

SIZES
S, M, L, XL, XXL



REFLECTIVE

IMPERIAL BLUE

WOODLAND

LINDEN GREEN

ASH

MINI LOGO



SOLID COLORS / WOODLAND:
100 % COTTON

ASH:
50 % COTTON, 50 % POLYESTER

PRINT ON CHEST

FIT
REGULAR

SIZES
S, M, L, XL, XXL



BLACK

SMOKE PINE

ASH

WOODLAND

WHITE

SPAZ TANK



SOLID COLORS:
100 % COTTON

WOODLAND:
50 % COTTON, 50 % POLYESTER

PRINT ON CHEST

FIT
SLIM TANK TOP

SIZES
S, M, L, XL, XXL



LAVA RED



LINDEN GREEN



WOODLAND



BLACK

VALE TANK



100 % COTTON

PRINT ON CHEST

FIT

SLIM TANK TOP

SIZES

S, M, L, XL, XXL

WOODLAND



23,99€

12,98€



BLACK



LINDEN GREEN

BAM TANK



100 % COTTON

PRINT ON CHEST

FIT
SLIM TANK TOP

SIZES
S, M, L, XL, XXL



21,99€

11,88€

BLACK



SMOKE PINE



TIE DYE

PANTS & SHORTS



STRETCH FABRICS

A range of stretch fabrics developed to be used on all products, which are frequently under pressure during movement. These fabrics contain from 1 % to 13 % of elastane.

VARUS



72 % COTTON, 26 % POLYESTER, 2 % ELASTANE

5-POCKET JEANS, ZIPPER FLY, YKK ZIPPERS

FIT SIZES

SLIM 28, 30, 32, 34, 36, 38

67,99€

36,74€

BLACK



MOSES



66 % COTTON, 33 % POLYESTER, 1 % ELASTANE

5-POCKET JEANS, ZIPPER FLY, YKK ZIPPERS

FIT

STRAIGHT

SIZES

28, 30, 32, 34, 36, 38

67,99€

36,74€

DARK BLUE



MACKS



98 % COTTON TWILL, 2 % ELASTANE

CLASSIC CHINO PANTS, ZIPPER FLY, YKK ZIPPERS

FIT

REGULAR SLIM

SIZES

28, 30, 32, 34, 36, 38

67,99€

36,74€



BLACK



SAND

MACKS SHORTS



98 % COTTON TWILL, 2 % ELASTANE

CLASSIC CHINO SHORTS, ZIPPER FLY, YKK ZIPPERS

59,99€

32,45€

FIT

REGULAR SLIM

SIZES

28, 30, 32, 34, 36, 38



BLACK

PIKE



63 % COTTON, 17 % POLYESTER, 19 % RAYLON, 1 % SPANDEX

5-POCKET SHORTS, ZIPPER FLY, CLEAN WASH, YKK ZIPPERS

FIT

SLIM STRAIGHT

SIZES

28, 30, 32, 34, 36, 38

59,99€

32,45€

DARK BLUE



BAXTER

100 % COTTON

CARGO 6-POCKETS SHORTS,
HEAVY ENZYME WASH,
BUTTON FLY

FIT
REGULAR

SIZES
28, 30, 32, 34, 36, 38

67,99€

36,74€

WOODLAND



BLACK



OLIVE



SAND

STAN



87 % POLYESTER, 13 % ELASTANE

4-WAY STRETCH FABRIC,
VELCRO FLY OPENING,
ZIPPER THIGH POCKET,
SUBLIMATION PRINT

LENGTH

19"

SIZES

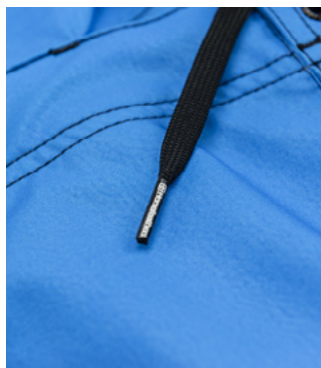
28, 30, 32, 33, 34, 36, 38



BLUE

63,99€

34,54€



ORANGE



BLACK

GUS



87 % POLYESTER, 13 % ELASTANE

4-WAY STRETCH FABRIC,
VELCRO FLY OPENING,
VELCRO THIGH POCKET
WITH LOGO PRINT,
SUBLIMATION PRINT

LENGTH

19"

SIZES

28, 30, 32, 33, 34, 36, 38

59,99€

32,45€



LIME



BLUE



RED

BECKETT

23,99€

12,98€

FLEXFIT,
EMBROIDERY ON FRONT PANEL

SIZES

ONE SIZE FITS ALL

HEATHER GRAY



BLACK

HUTCH

23,99€

12,98€

FLEXFIT,
EMBROIDERY ON FRONT PANEL

SIZES

ONE SIZE FITS ALL

BLACK



WOODLAND

GRAVES

27,99€

15,18€

SNAPBACK CAP,
LEATHER LABEL ON FRONT PANEL,
WOVEN LABEL ON BACK PANEL

SIZES

ONE SIZE FITS ALL



BLACK



HEATHER BLACK

HEX

27,99€

15,18€

SNAPBACK CAP,
EMBROIDERED PATCH ON FRONT PANEL,
WOVEN LABEL ON BACK PANEL

SIZES

ONE SIZE FITS ALL



HEATHER BLACK



BLACK

DUSTY

27,99€

15,18€

TRUCKER CAP,
Twill + MESH,
WOVEN PATCH
ON FRONT PANEL,
WOVEN LABEL
ON BACK PANEL

SIZES

ONE SIZE FITS ALL



TIE DYE

WOODLAND



HEATHER GRAY



RICK

19,99€

10,78€

TRUCKER CAP,
Twill + MESH,
WOVEN PATCH
ON FRONT PANEL,
WOVEN LABEL
ON BACK PANEL

SIZES

ONE SIZE FITS ALL



WHITE

BLACK



BRAD

39,99€

21,56€



GENUINE LEATHER BODY

METAL LOGO LABEL, 2 MAIN SLEEVES, 6 CREDIT CARD SLOTS, COIN POCKET

SIZE

11 × 9 CM (4,3" × 3,6")



TOBACCO



BROWN



BLACK

TERRY

19,99€

10,78€

POLYESTER / PU LEATHER BODY

PU LEATHER PANEL, METAL LOGO LABEL, 1 MAIN SLEEVE, 4 CREDIT CARD SLOTS, ZIPPER COIN POCKET

SIZE

11 × 9,7 CM (4,3" × 3,8")



ASPHALT



BLACK



HEATHER GRAY

CROZER

23,99€

12,98€

100 % POLYESTER BODY

WOVEN LABEL, 2 MAIN SLEEVES,
6 CREDIT CARD SLOTS, ZIPPER COIN POCKET

SIZE

12 × 9,3 CM (4,7" × 3,7")



BLACK



OLIVE

COLBERT

23,99€

12,98€

100 % PU LEATHER BODY

EMBOSSED ARTWORK, 2 MAIN SLEEVES,
9 CREDIT CARD SLOTS, ZIPPER COIN POCKET

SIZE

11,5 × 9,5 CM (4,5" × 3,7")



BROWN



BLACK

FRED

39,99€

21,56€



GENUINE LEATHER

EMBOSSED LOGO ON STRAP, CUSTOM METAL SNAPS, CUSTOM LOGO BUCKLE

SIZES

ONE SIZE FITS ALL



BLACK



BROWN



TOBACCO

IDOL

19,99€

10,78€

PRINTED COTTON STRAP

CUSTOM LOGO,
BEER OPENER BUCKLE,
CUSTOM LOGO BELT TIP

SIZES

ONE SIZE FITS ALL



OLIVE



GRAY



BLACK



B&W

MACK

15,99€

8,69€

COTTON STRAP WITH WOVEN LABEL

CUSTOM LOGO BUCKLE,
CUSTOM LOGO BELT TIP

SIZES

ONE SIZE FITS ALL



BLACK



OLIVE



GRAY

SIDNEY

17,99€

9,79€



95 % COTTON, 5 % ELASTANE

KNITTED BOXER BRIEFS, COMFORTABLE FIT, HIGHLY DURABLE, CUSTOM ELASTIC WAISTBAND

SIZES

S, M, L, XL, XXL



GHOST

PLAYGROUND



DOODLE



HAZE



SAILOR



STARS



PICKLES



FRAZIER

15,99€

8,69€

100 % COTTON

WOVEN BOXER SHORTS,
ALLOVER PRINTED
LIGHTWEIGHT FABRIC,
COMFORTABLE FIT,
HIGHLY DURABLE,
CUSTOM ELASTIC
WAISTBAND

SIZES

S, M, L, XL, XXL



DOODLE

PLAYGROUND



PICKLES



MANNY

13,99€

7,59€

100 % COTTON

WOVEN BOXER SHORTS,
ALLOVER PRINTED LIGHTWEIGHT
FABRIC, COMFORTABLE FIT,
HIGHLY DURABLE,
WOVEN LABEL

SIZES

S, M, L, XL, XXL



PLAYGROUND

DOODLE



PICKLES



CLAY

13,99€

7,59€

100 % COTTON

WOVEN BOXER SHORTS, YARN DYED LIGHTWEIGHT CHECKER, COMFORTABLE FIT, HIGHLY DURABLE, CUSTOM ELASTIC WAISTBAND

SIZES

S, M, L, XL, XXL



MARLEY

CASTLEROCK



STELLAR



KIWI



PINE



GRAYSCALE



SUNRISE



TEAL GREEN



CHARCOAL



CMYK



ULTRAMARINE



OCTOBER



SONNY

11,99€

6,49€

100 % COTTON

WOVEN BOXER SHORTS, YARN DYED LIGHTWEIGHT CHECKER, COMFORTABLE FIT, HIGHLY DURABLE, WOVEN LABEL

SIZES

S, M, L, XL, XXL



MARLEY



STELLAR



KIWI



PINE



GRAYSCALE



SUNRISE



TEAL GREEN



CHARCOAL



CASTLEROCK



ULTRAMARINE



OCTOBER



CMYK

27,99€

DYNASTY 3PACK 15,18€



95 % COTTON, 5 % ELASTANE

KNITTED BOXER BRIEFS,
CUSTOM ELASTIC WAISTBAND,
COMFORTABLE FIT,
HIGHLY DURABLE,
PRINT ON SIDE

SIZES

S, M, L, XL, XXL



ASSORTED

BLACK



HEATHER
ANTHRACITE



HEATHER
GRAY



DELETE 3PACK

11,99€

6,49€



80 % COTTON, 15 % POLYPROPYLENE, 5 % ELASTANE

LOGO JACQUARD, REINFORCED HEEL AND TOE,
CUSHIONED FOOTBED, TRIPLE PACK

FIT SIZES

CREW 5-7, 8-10, 11-13

WHITE



BLACK

RAPID PREMIUM 3PACK

11,99€



80 % COTTON, 15 % POLYPROPYLENE, 5 % ELASTANE

LOGO JACQUARD, ELASTIC ARCH SUPPORT,
REINFORCED HEEL AND TOE, CUSHIONED FOOTBED,
TRIPLE PACK

FIT SIZES

ANKLE 5-7, 8-10, 11-13

WHITE



BLACK

6,49€

RAPID 3PACK

7,99€



80 % COTTON, 15 % POLYPROPYLENE, 5 % ELASTANE

LOGO JACQUARD, REINFORCED HEEL AND TOE,
TRIPLE PACK

FIT SIZES

ANKLE 5-7, 8-10, 11-13

WHITE



BLACK

4,40€

LOTAN 3PACK

11,99€



80 % COTTON, 15 % POLYPROPYLENE, 5 % ELASTANE

LOGO JACQUARD, ELASTIC ARCH SUPPORT,
REINFORCED HEEL AND TOE,
ANTI-SLIP LOGO RUBBER PROTECTION,
TRIPLE PACK

FIT SIZES

INVISIBLE 5-7, 8-10, 11-13



BLACK

6,49€

CONOR

7,99€



80 % COTTON, 15 % POLYPROPYLENE, 5% ELASTANE

4,40€

PHOTO PRINT,
REINFORCED HEEL AND TOE

FIT SIZES
CREW 5-7, 8-10, 11-13

LEAVES



TIEDYE



PICKLES

SNOOK

5,49€



80 % COTTON, 15 % POLYPROPYLENE, 5% ELASTANE

2,97€

LOGO JACQUARD, JACQUARD DESIGN,
REINFORCED HEEL AND TOE,
CUSHIONED FOOTBED

FIT SIZES
ANKLE 5-7, 8-10, 11-13

JADE



RED ORANGE



COLTON

5,49€

2,97€



80 % COTTON, 15 % POLYPROPYLENE, 5 % ELASTANE

LOGO JACQUARD,
REINFORCED HEEL AND TOE,
CUSHIONED FOOTBED

FIT SIZES

ANKLE 5-7, 8-10, 11-13



WHITE

BLACK

IMPERIAL BLUE

NORM



80 % COTTON, 15 % POLYPROPYLENE, 5 % ELASTANE

LOGO JACQUARD,
REINFORCED HEEL AND TOE,
CUSHIONED FOOTBED

5,49€

2,97€

FIT SIZES

ANKLE 5-7, 8-10, 11-13



WHITE

BLACK

JADE

BOLTER

67,99€

YKK

36,74€

POLYESTER CONSTRUCTION, 2 MAIN COMPARTMENTS, SIDE PADDED LAPTOP POCKET, MAGAZINE SLEEVE, INTERIOR ORGANIZER, ADJUSTABLE SKATEBOARD STRAPS, 2 EXTERIOR ZIPPER POCKETS, 2 SIDE ZIPPER POCKETS, REINFORCED BOTTOM, ERGONOMIC PADDED STRAPS, CHEST STRAP, YKK ZIPPERS

VOLUME

26 L



BLACK

BOURNE

YKK

POLYESTER CONSTRUCTION, MAIN COMPARTMENT WITH PADDED LAPTOP SLEEVE, 3 EXTERIOR ZIPPER POCKETS, 2 SIDE POCKETS, REINFORCED BOTTOM, ERGONOMIC PADDED STRAPS, CHEST STRAP, YKK ZIPPERS

67,99€

VOLUME 36,74€

24 L



BLACK

RENDER

YKK

POLYESTER CONSTRUCTION, MAIN COMPARTMENT WITH PADDED LAPTOP SLEEVE,
2 EXTERIOR ZIPPER POCKETS, 2 SIDE MESH POCKETS, REINFORCED BOTTOM, ERGONOMIC PADDED STRAPS,
CHEST STRAP, YKK ZIPPERS

VOLUME

25 L

59,99€

32,45€



OLIVE



BLACK



GUNMETAL

A close-up photograph of a blue zippered garment, likely a jacket or hoodie. The fabric has a fine, woven texture. A silver zipper pull is visible on the right side, featuring a small logo. The text 'WOMEN'S STREET WEAR' is printed in large, white, bold, stylized letters across the center of the image. The letters are slightly slanted and have a thick, blocky appearance. The background is a solid blue color with some subtle variations in tone due to the lighting and fabric texture.

WOMEN'S STREET WEAR



AKIRA

5.000 MM

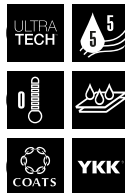
WATERPROOFNESS

5.000 GM

BREATHABILITY

119,99€

64,79€



100 % POLYESTER

WATER REPELLENT LAMINATED MEMBRANE,
OUTER C6 DWR TREATMENT,
NYLON TAFFETA LINING,
YKK ZIPPERS, THREADS BY COATS,
INTERIOR POCKET,
WAIST ADJUSTMENT,
CHINGUARD WITH BRUSHED FLEECE

INSULATION

NONE

FIT

TAILORED LONG FIT

SIZES

XS, S, M, L, XL



ORCHID

ULTRA
TECH

ULTRATECH WATERPROOF FABRICS

ultratechfabrics.com

UltraTech is a range of high quality materials developed in collaboration with leading Taiwanese manufacturers who specialize in technical fabrics and yarns. Designed to maximize performance across diverse conditions, UltraTech fabrics are manufactured in fully controlled facilities, using advanced processes. The technical outer shell is laminated with a fully waterproof and breathable membrane, then treated with a water repellent DWR (Durable Water Repellent) film. This process guarantees a high performance fabric that is rugged and robust.



HEATHER GRAY



LEMON



BLACK

PAIGE



SOLID COLORS / WOODLAND:
65 % COTTON, 35 % POLYESTER

DARK ASH:
50 % COTTON, 50 % POLYESTER

NON BRUSHED FLEECE,
PATCH ON CHEST,
YKK ZIPPERS

FIT

SLIM

SIZES

XS, S, M, L, XL

75,99€

41,03€



DARK ASH



DOTS



WOODLAND



APRICOT

ELIZA



65 % COTTON, 35 % POLYESTER

NON BRUSHED FLEECE,
PATCH ON CHEST
YKK ZIPPERS

FIT
SLIM

SIZES
XS, S, M, L, XL

71,99€

38,83€



DOTS



APRICOT

WOODLAND

GERI



65 % COTTON, 35 % POLYESTER

NON BRUSHED FLEECE,
CHEST AND BACK PRINT

FIT
BOYFRIEND

SIZES
XS, S, M, L, XL

71,99€

38,83€



TIE DYE



GRANITE GREEN



LEMON



BLACK

DUA



SOLID COLORS:
65 % COTTON, 35 % POLYESTER

ASH:
50 % COTTON, 50 % POLYESTER

NON BRUSHED FLEECE,
PRINT ON SLEEVES,
WOVEN LABEL ON POCKET

FIT
RELAXED

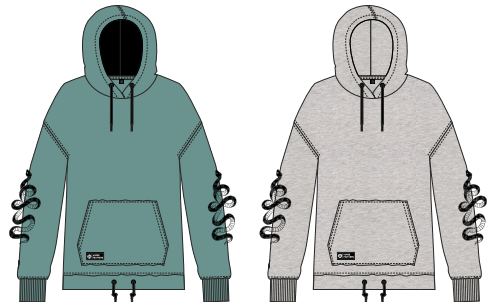
SIZES
XS, S, M, L, XL

59,99€

32,45€



LEMON



GRANITE GREEN

ASH

MARIANA

100 % COTTON WOVEN DENIM

WAIST ADJUSTMENT,
WOVEN LABEL ON CHEST
AND BOTTOM

FIT
CASUAL WITH DROP

SIZES
XS, S, M, L, XL

55,99€

30,25€



LIGHT BLUE

INDIGO

MILLIE

39,99€

21,56€

100 % COTTON

ELASTIC WAISTBAND
PRINT ON CHEST

FIT

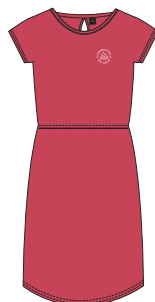
RELAXED

SIZES

XS, S, M, L, XL



TIE DYE



GARNET ROSE



BLACK

QUINN



SOLID COLORS:
100 % COTTON

ASH:
50 % COTTON, 50 % POLYESTER

PRINT ON CHEST

FIT
RELAXED

SIZES
XS, S, M, L, XL

31,99€

17,27€



GARNET ROSE



BLACK



ASH

ASTRID



BLACK / TIE DYE:
100 % COTTON

CORAL NEPS / SILVER FOX / DEEP OCEAN:
80 % POLYESTER, 20 % COTTON

WOVEN LABEL AT BOTTOM

FIT

RELAXED

SIZES

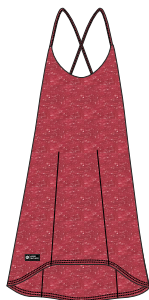
XS, S, M, L, XL

35,99€

19,47€



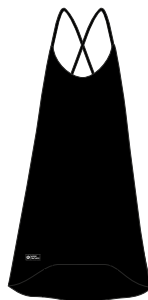
DEEP OCEAN



CORAL NEPS



SILVER FOX



BLACK



TIE DYE

IVET



100 % COTTON

PRINT ON CHEST,
WOVEN LABEL AT BOTTOM

FIT
RELAXED

SIZES
XS, S, M, L, XL

31,99€

17,27€



BLACK



GARNET ROSE

LOIS



SOLID COLORS:
100 % COTTON

ASH:
50 % COTTON, 50 % POLYESTER

PRINT ON CHEST AND BACK

FIT

RELAXED WITH DROP

SIZES

XS, S, M, L, XL

27,99€

15,18€



ASH



WHITE



BLACK



TIE DYE

AMARA



TIE DYE:
100 % COTTON

CORAL NEPS / SILVER FOX /
DEEP OCEAN:
80 % POLYESTER, 20 % COTTON

CHEST POCKET,
WOVEN LABEL AT BOTTOM

FIT

LOOSE

SIZES

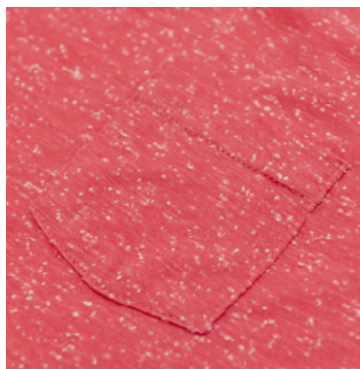
XS, S, M, L, XL

27,99€

15,18€



CORAL NEPS



SILVER FOX

DEEP OCEAN

TIE DYE

BLADE



100% COTTON

PRINT ON CHEST AND BACK

FIT

SLIM LONG

SIZES

XS, S, M, L, XL

23,99€

12,98€



WHITE



WOODLAND



GARNET ROSE

TASHA



100 % COTTON

PRINT ON CHEST,
WOVEN LABEL ON BOTTOM HEM

FIT

SLIM

SIZES

XS, S, M, L, XL

23,99€

12,98€

GARNET ROSE



WOODLAND

WHITE

BLACK

AREA



100% COTTON

PRINT ON CHEST

FIT

SLIM

SIZES

XS, S, M, L, XL



23,99€

12,98€



BLACK



GARNET ROSE



WHITE

ELEONOR



100 % COTTON

PRINT ON CHEST

FIT
SLIM

SIZES
XS, S, M, L, XL

19,99€

10,78€



LINDEN GREEN



GARNET ROSE



BLACK

MEXICANA

design by
@daviddebete



100% COTTON

PRINT ON CHEST

FIT

LOOSE

SIZES

XS, S, M, L, XL

23,99€

12,98€



WHITE



LINDEN GREEN



GARNET ROSE

CHERYL



80 % POLYESTER, 20 % COTTON

WOVEN LABEL ON SHOULDER

FIT

LOOSE

SIZES

XS, S, M, L, XL



23,99€

12,98€

SILVER FOX



DEEP OCEAN



CORAL NEEPS

KERI

SNAPBACK CAP

PRINTED PATCH ON FRONT PANEL,
WOVEN LABEL ON BACK PANEL

SIZES

ONE SIZE FITS ALL

27,99€

15,15€



DEEP NEPS



BLACK

AYLA

100 % POLYESTER BODY

WOVEN LABEL, 5 MAIN SLEEVES, 12 CREDIT CARD SLOTS, ID WINDOW, ZIPPER COIN POCKET

SIZE

19 × 10 CM (7,5" × 3,9")

31,99€

17,27€



WINE



BLACK

TATE

COTTON / PU LEATHER BODY

LEATHER PATCH, 5 MAIN SLEEVES, 12 CREDIT CARD SLOTS, ID WINDOW, ZIPPER COIN POCKET

SIZE

19,5 × 10 CM (7,7" × 3,9")

31,99€

17,27€



NAVY



BLACK

RUN 3PACK

11,99€

6,49€



70 % COTTON, 25 % POLYPROPYLENE, 5 % ELASTANE,

LOGO JACQUARD, REINFORCED HEEL AND TOE,
ENGINEERED FOR SPORTS, TRIPLE PACK

FIT SIZES

ANKLE 5-6, 7-8



GARNET ROSE



WHITE



BLACK

ALIA 3PACK

11,99€

6,49€



80 % COTTON, 15 % POLYPROPYLENE, 5 % ELASTANE,

LOGO JACQUARD, ELASTIC ARCH SUPPORT,
REINFORCED HEEL AND TOE, ANTI-SLIP LOGO
RUBBER PROTECTION, TRIPLE PACK

FIT SIZES

INVISIBLE 5-6, 7-8



BLACK



WHITE

RANYA

80 % COTTON,
15 % POLYPROPYLENE,
5 % ELASTANE

LOGO JACQUARD,
PHOTO PRINT,
REINFORCED
HEEL AND TOE

FIT **SIZES**
CREW 5-6, 7-8

7,99€

4,40€



ROSES



TIE DYE

INA

80 % COTTON, 15 % POLYPROPYLENE, 5 % ELASTANE

LOGO JACQUARD, REINFORCED HEEL AND TOE

FIT **SIZES**
ANKLE 5-6, 7-8

5,49€

2,97€



PURPLE



RIVER BLUE

SALMA



80 % COTTON,
15 % POLYPROPYLENE
5 % ELASTANE

LOGO JACQUARD,
REINFORCED HEEL AND TOE

FIT SIZES

ANKLE 5-6, 7-8

5,49€
2,97€

TEAL BLUE



PINK



DEA



80 % COTTON, 15 % POLYPROPYLENE, 5 % ELASTANE

LOGO JACQUARD, REINFORCED HEEL AND TOE

FIT SIZES

ANKLE 5-6, 7-8

5,49€

2,97€

APRICOT



WHITE



BLACK



KARA



80 % COTTON,
15 % POLYPROPYLENE,
5 % ELASTANE

LOGO JACQUARD,
REINFORCED HEEL AND TOE

FIT SIZES

INVISIBLE 5-6, 7-8

5,49€
2,97€

PINK



APRICOT





YOUTH STREET- WEAR



TREVOR YOUTH



65 % COTTON, 35 % POLYESTER

NON BRUSHED FLEECE,
PRINT ON CHEST

FIT
REGULAR

SIZES
XS, S, M, L, XL

47,99€

25,96€



LAVA RED



WOODLAND

LEADER



65 % COTTON, 35 % POLYESTER

BRUSHED FLEECE,
PRINT ON CHEST

FIT
REGULAR

SIZES
XS, S, M, L, XL

39,99€

21,56€



TIE DYE



BLACK

WOODLAND

LAVA RED

BRICKS YOUTH



100 % COTTON

PRINT ON CHEST

FIT
REGULAR

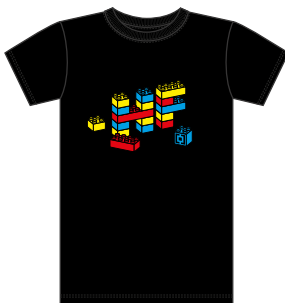
SIZES
XS, S, M, L, XL

19,99€

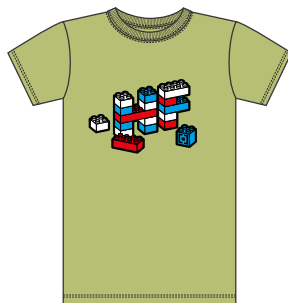
10,78€



WHITE



BLACK



LINDEN GREEN

FAB YOUTH



100 % COTTON

PRINT ON CHEST

FIT

REGULAR

SIZES

XS, S, M, L, XL

19,99€

10,78€



IMPERIAL BLUE



LINDEN GREEN



BLACK

RAGGED YOUTH



100 % COTTON

PRINT ON CHEST

FIT
REGULAR

SIZES
XS, S, M, L, XL

19,99€

10,78€



BLACK



IMPERIAL BLUE



LAVA RED

BASE YOUTH



100 % COTTON

PRINT ON CHEST

FIT

REGULAR

SIZES

XS, S, M, L, XL

15,99€

8,69€



LAVA RED



BLACK



TIE DYE



WOODLAND

JOAN YOUTH



100 % COTTON

PRINT ON CHEST

FIT
REGULAR

SIZES
XS, S, M, L, XL

15,99€

8,69€

GARNET ROSE



LINDEN GREEN



TIE DYE

HUTCH YOUTH

FLEXFIT,
EMBROIDERY ON FRONT PANEL

SIZES
YOUTH

19,99€
10,78€



HEATHER
GRAY



GRAVES YOUTH

SNAPBACK CAP, LEATHER LABEL ON FRONT
PANEL, WOVEN LABEL ON BACK PANEL

SIZES
YOUTH

23,99€
12,98€



HEATHER
BLACK



RICK YOUTH

TRUCKER CAP, TWILL + MESH, WOVEN LABEL ON
FRONT PANEL, WOVEN LABEL ON BACK PANEL

SIZES
YOUTH

15,99€
8,69€



BLACK



WHITE



DUSTY YOUTH

TRUCKER CAP, TWILL + MESH, WOVEN LABEL ON
FRONT PANEL, WOVEN LABEL ON BACK PANEL

SIZES
YOUTH

19,99€
10,78€



WOODLAND



SUN-GLASSES



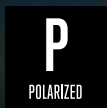
HIGH QUALITY HAND MADE
ACETATE FRAMES



5 BARREL
HINGE



6-BASE FOR EASY
RX-FITTING



HIGH QUALITY
POLARIZED LENSES



100 % UV
PROTECTION



BRANDED HARDCASE WITH
CLEANING CLOTH



GLOSTER

FRAME

COMFORTABLE METAL FRAME WITH ADJUSTABLE SILICON NOSE PADS, 6-BASE FOR EASY RX-FITTING

MEASUREMENTS

LENS 59 MM, BRIDGE 15 MM, TEMPLE 140 MM

OPTICS

HIGH QUALITY TAC POLARIZED LENSES, 1.1 MM THICK, 100% UV PROTECTION, GLARE-FREE VISION, CLEAR CONTRAST, TRUE COLOURS

79,99€

43,23€



MATT BLACK / MIRROR WHITE



GOLD / GOLD FADE OUT



SILVER / GRAY FADE OUT



SIVER BLACK / BLUE FADE OUT

TRIGGER

FRAME

HIGH QUALITY HAND MADE ACETATE, 5 BARREL HINGE, HEAT TEMPERED WIRE TEMPLE INSERTS, 6-BASE FOR EASY RX-FITTING

MEASUREMENTS

LENS 58 MM,
BRIDGE 16 MM,
TEMPLE 145 MM

OPTICS

HIGH QUALITY TAC POLARIZED LENSES,
1.1 MM THICK, 100% UV PROTECTION, GLARE-FREE VISION, CLEAR CONTRAST, TRUE COLOURS

75,99€

41,03€



MATT BLACK / MIRROR RED



BRUSHED BLACK / MIRROR BLUE



MATT BLACK / GRAY GREEN



GLOSS BLACK / GRAY

NOMAD

FRAME

HIGH QUALITY HAND MADE ACETATE, 5 BARREL HINGE, HEAT TEMPERED WIRE TEMPLE INSERTS, 6-BASE FOR EASY RX-FITTING

MEASUREMENTS

LENS 50 MM,
BRIDGE 21 MM,
TEMPLE 145 MM

OPTICS

HIGH QUALITY POLARIZED LENSES, 1.1 MM THICK, 100% UV PROTECTION, GLARE-FREE VISION, CLEAR CONTRAST, TRUE COLOURS

71,99€

38,83€



MATT HAVANA / GREEN



GLOSS BLACK / MIRROR BLUE



MATT BLACK / MIRROR ROSE



GLOSS ROSE / MIRROR CHAMPAGNE

ZIGGY

FRAME

HIGH QUALITY HAND MADE ACETATE, 5 BARREL HINGE, HEAT TEMPERED WIRE TEMPLE INSERTS, 6-BASE FOR EASY RX-FITTING

MEASUREMENTS

LENS 55 MM,
BRIDGE 19 MM,
TEMPLE 140 MM

OPTICS

HIGH QUALITY TAC POLARIZED LENSES,
1.1 MM THICK, 100% UV PROTECTION, GLARE-FREE VISION, CLEAR CONTRAST, TRUE COLOURS

71,99€

38,83€



CHLOE

FRAME

HIGH QUALITY HAND MADE ACETATE, 5 BARREL HINGE, HEAT TEMPERED WIRE TEMPLE INSERTS, 6-BASE FOR EASY RX-FITTING

MEASUREMENTS

LENS 55 MM,
BRIDGE 17 MM,
TEMPLE 140 MM

OPTICS

HIGH QUALITY TAC POLARIZED LENSES,
1.1 MM THICK, 100% UV PROTECTION, GLARE-FREE VISION, CLEAR CONTRAST, TRUE COLOURS

63,99€

34,54€



GLOSS BLACK / MIRROR ROSE



MATT BLACK / GRAY FADE OUT



BRUSHED BLACK / MIRROR BLUE



GLOSS ROSE / MIRROR CHAMPAGNE



GLOSS HAVANA / BROWN FADE OUT

ZENITH

FRAME

LIGHTWEIGHT AND DURABLE MATERIAL TR 90, METAL LOGO AND HINGE, 8-BASE FOR EASY RX-FITTING

MEASUREMENTS

LENS 64 MM, BRIDGE 18 MM, TEMPLE 120 MM

OPTICS

HIGH QUALITY TAC POLARIZED LENSES, 1,1 MM THICK, 100% UV PROTECTION, GLARE-FREE VISION, CLEAR CONTRAST, TRUE COLOURS

47,99€

25,96€



MATT BLACK FADE OUT / MIRROR BLUE



MATT BLACK / MIRROR GREEN



MATT BLACK / MIRROR WHITE



GLOSS BLACK / MIRROR RED



GLOSS BLACK / GRAY

FOSTER

FRAME

HIGH QUALITY HAND MADE ACETATE, 5 BARREL HINGE, HEAT TEMPERED WIRE TEMPLE INSERTS, 6-BASE FOR EASY RX-FITTING

MEASUREMENTS

LENS 54 MM,
BRIDGE 20 MM,
TEMPLE 140 MM

OPTICS

HIGH QUALITY POLARIZED LENSES, 2.0 MM THICK, 100% UV PROTECTION, GLARE-FREE VISION, CLEAR CONTRAST, TRUE COLOURS

51,99€

28,05€



BRUSHED BLACK / GRAY



ZEBRA / MIRROR GREEN



GLOSS BLACK / MIRROR RED



MATT MINT / GRAY FADE OUT



GLOSS BLACK / MIRROR ROSE



GLOSS WHITE / MIRROR ROSE

KEATON

FRAME

HIGH QUALITY HAND MADE ACETATE, 5 BARREL HINGE, HEAT TEMPERED WIRE TEMPLE INSERTS, 6-BASE FOR EASY RX-FITTING

MEASUREMENTS

LENS 56 MM,
BRIDGE 19 MM,
TEMPLE 135 MM

OPTICS

HIGH QUALITY TAC POLARIZED LENSES, 1.1 MM THICK, 100% UV PROTECTION, GLARE-FREE VISION, CLEAR CONTRAST, TRUE COLOURS

55,99€

30,25€



MATT BLACK TURTLE / GRAY



GLOSS BLACK / MIRROR GREEN



BRUSHED BLACK / MIRROR BLUE



MATT BLACK / MIRROR RED



GLOSS BLACK / GRAY



GLOSS BLACK / MIRROR WHITE

MERLIN

FRAME

LIGHTWEIGHT AND DURABLE MATERIAL, METAL LOGO AND HINGE, 6-BASE FOR EASY RX-FITTING

MEASUREMENTS

LENS 58 MM, BRIDGE 17 MM, TEMPLE 145 MM

OPTICS

HIGH QUALITY POLARIZED LENSES, 1.1 MM THICK, 100% UV PROTECTION, GLARE-FREE VISION, CLEAR CONTRAST, TRUE COLOURS

39,99€

21,56€



GLOSS BLACK / GRAY FADE OUT



GLOSS BLACK / MIRROR RED



GLOSS BLACK / MIRROR GREEN



MATT BLACK / GRAY



MATT BLACK / MIRROR ORANGE



MATT BLACK / MIRROR BLUE



CRYSTAL / MIRROR BLUE

HISTORY

1989



Horsefeathers starts as a High-School project in British Columbia, Canada.

1992



Hanuš Salz, one of the original Horsefeathers crew moves to Pilsen, CZ where he meets Pavel Kubiček. Together they start Horsefeathers Clothing.

1994



The first Horsefeathers office looked like a typical snowboarder owned company. Beer cans, clothing sketches, punk music all tied together with excitement for the future.

2000



Second Horsefeathers snowboard and skate shop opens in Brno to fill a gap in the market.

2004



International distribution of Horsefeathers Clothing gets a push through the first attendance at ISPO Munich and the following new sales locations.

2009



The legendary Horsefeathers Pleasure Jam and Horsefeathers SuperPark Dachstein and Planai projects kick off.

1995



The first Horsefeathers shop, the only pure snowboard and skate shop in the city of Pilsen opens in December '95.

1997



The first full line of technical outerwear is launched for the '97/'98 winter season.

1998



Two months of riding the best mountains in the US North West and Canadian British Columbia make for the best trip ever and give base to further developing the brand.

2015



A new global team setup is announced with Eiki Helgason, Tyler Chorlton, Mans Hedberg, Antti Jussila and others coming together to ride, have fun and progress Horsefeathers Clothing presence.

2018



After two successful years of atrip apparel, the brand was implemented into Horsefeathers Clothing as Halldor's Signature line and Halldor joined the Horsefeathers Global Team.

2019



Celebrating the 30th anniversary from the first Horsefeathers idea back in 1989 in British Columbia, Canada. **#HF30**

TEAM

NATIONAL

DAISUKE WATANABE ^{JP}

ZHANG PENG ^{CN}

CHEN GANG ^{CN}

WANG QIYUE ^{CN}

XIAO MA ^{CN}

SEAN SHOCHAT ^{IL}

TOM KLAPFER ^{IL}

SEAN MACPHEE ^{AU}

JACK STEELE ^{AU}

VITALIY SUHOMESOV ^{RU}

ILYA BASKAKOV ^{RU}

ARTEM USHAKOV ^{RU}

STAS KACHURA ^{BY}

KIRILL MILIUTIN ^{UA}

ANDRII KOZHUKHAR ^{UA}

DAVID VICENTE ^{ES}

ALEIX CALDERÓN ^{ES}

LORIS FRAMARIN ^{IT}

OLGA MARTINELLI ^{IT}

FEDERICO RESEGA ^{IT}

MARC ROBERT ^{CH}

HANS ÅHLUND ^{SE}

BALDUR VILHELMSSON ^{IS}

KASPER DE ZOETE ^{NL}

CLEMENS BERGMANN ^{AT}

STEVE GRUBER ^{AT}

VLADIMIR PAVLOV ^{BG}

DUŠAN KRÍŽ ^{CZ}

JAN LOHYNSKÝ ^{CZ}

LADISLAV HRSTKA ^{CZ}

DANIEL HANKA ^{CZ}

ZOLTÁN STRCULA ^{SK}

DUŠAN BÍZIK ^{SK}

JÚLIUS PETRÍK ^{SK}

BORIS KAROLČÍK ^{SK}

GLOBAL



**HALLDÓR
HELGASON** IS



**EIKI
HELGASON** IS



**TYLER
CHORLTON** AD



**ANTTI
JUSSILA** FI



**EGOR
CHEBANOV** RU



**MÅNS
HEDBERG** SE

ROOKIE

JAKUB HRONEŠ CZ

KRISTIÁN SALAČ CZ

TIMON MATĚNA CZ

MARTIN JOZSA SK

ADÉLA DONČUKOVÁ CZ

HALLE MCRAE AU

SKATE

MAXIM HABANEC CZ

ARNOŠT CERAL CZ

MICHAL GÁLÍK CZ

KRISTIÁN NGUYEN SK







Horsefeathers clothing
Slovanská alej 24, 326 00 Pilsen
Czech Republic

+420 377 455 925
info@horsefeathers.eu
www.horsefeathers.eu

ACTION/LIFESTYLE PHOTOS

@jarasijka
@luboswisniewski

PRODUCTS PHOTOS

@luboswisniewski
@tomas_vojtas

 **@horsefeathers**

 **@horsefeathers.eu**

#horsefeathers

#hfskateboarding



 Horsefeathers